

WNPA Well Nut

Neoprene · Standard flange
M3 - M8

Well Nut threaded insert is a flanged neoprene rubber bushing with a brass machine nut moulded into one end. Tightening a conventional machine screw threaded in the brass nut causes the insert to expand, making a secure fastening.

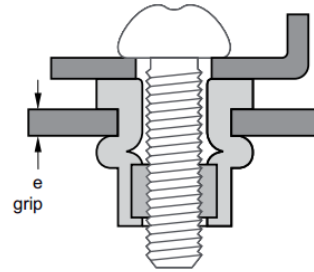
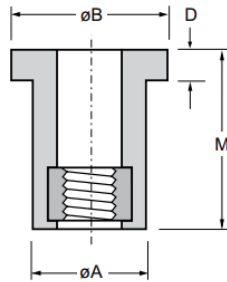


Features

- Provides an excellent vibration-isolating effect to absorb vibration and noise
- Ability to seal liquids and gases, particularly suited for use in low pressure environments
- Exhibits excellent electrical insulation properties
- Large flange feature increases the bearing surface for weaker/thinner materials
- Multiple base materials can be fastened effectively
- Stable fastening strength can be achieved even in a blind hole or deep hole
- Available in a neoprene-rubber as standard or EPDM. Neoprene-rubber offers stable strength and exhibits average levels of all beneficial properties. EPDM is particularly suitable in an outdoor environment where the nut must provide weather resistance, ozone resistance etc.
- Installed when the mating screw is tightened using a screwdriver to recommended torque.

Material

- Body: Neoprene
- Insert: Brass



Part No.	Thread Size	Grip Range		Hole Size	øA	øB	D	M	Tightening Torque	
		min.	max.							-
WNPA-0311-E632	M3 x 0.5	0.40	4.00	8.1	7.9	11.0	1.2	12.6	0.4	
WNPA-0411-B832	M4 x 0.7	0.40	4.00	8.1	7.9	11.0	1.2	12.6	0.3	
WNPA-0514-10S	M5 x 0.8	0.40	4.90	9.8	9.6	14.0	0.9	14.1	0.4	
WNPA-0516-Q1032		0.90	5.90				1.0	17.0	0.5	
WNPA-0521-H1032		4.00	10.00				0.9	21.5	0.6	
WNPA-0525-10SL		7.90	15.00				1.3	26.5	0.5	
WNPA-0615-1/4S	M6 x 1.0	0.40	4.00	12.9	12.7	16.0	1.3	16.0	0.8	
WNPA-0619-W1420		4.70	8.70				20.3	0.8		
WNPA-0625-J1420		6.40	11.50				16.3	2.0	26.7	0.9
WNPA-0815-E51618		0.40	4.00				16.1	15.9	21.5	3.2



Can't find what you are looking for?

We can provide unique and customized solutions.
Contact your nearest [Gripwell](#) team for assistance!